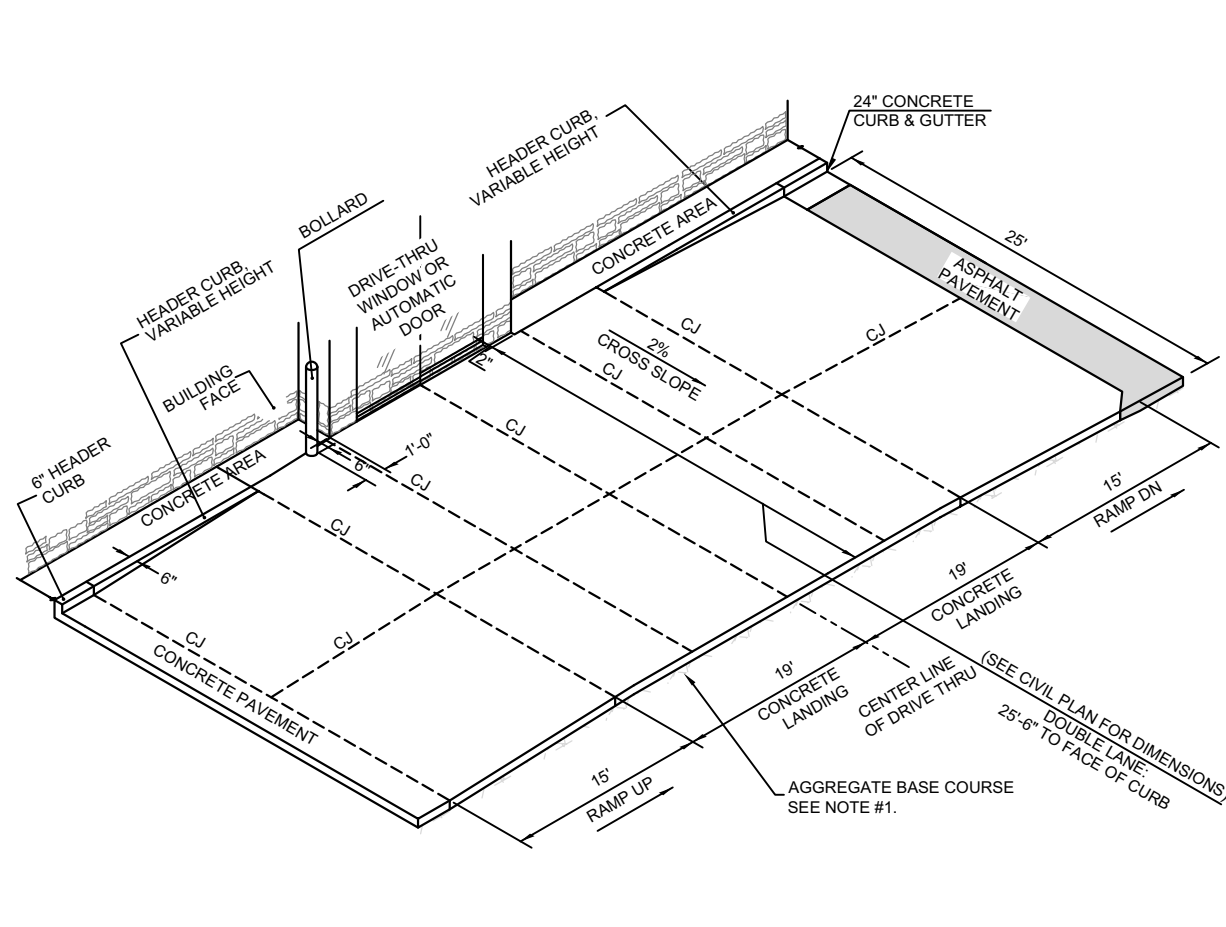
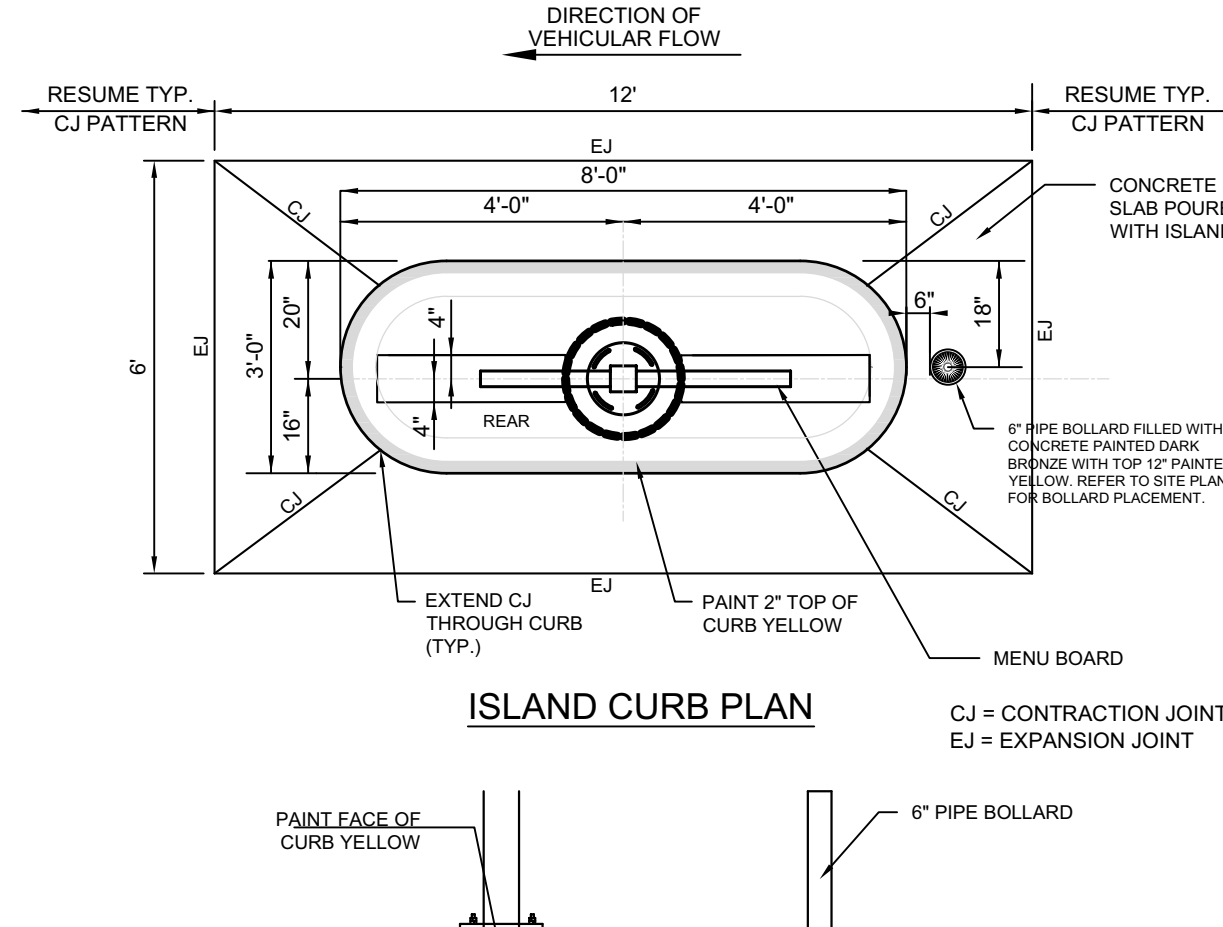


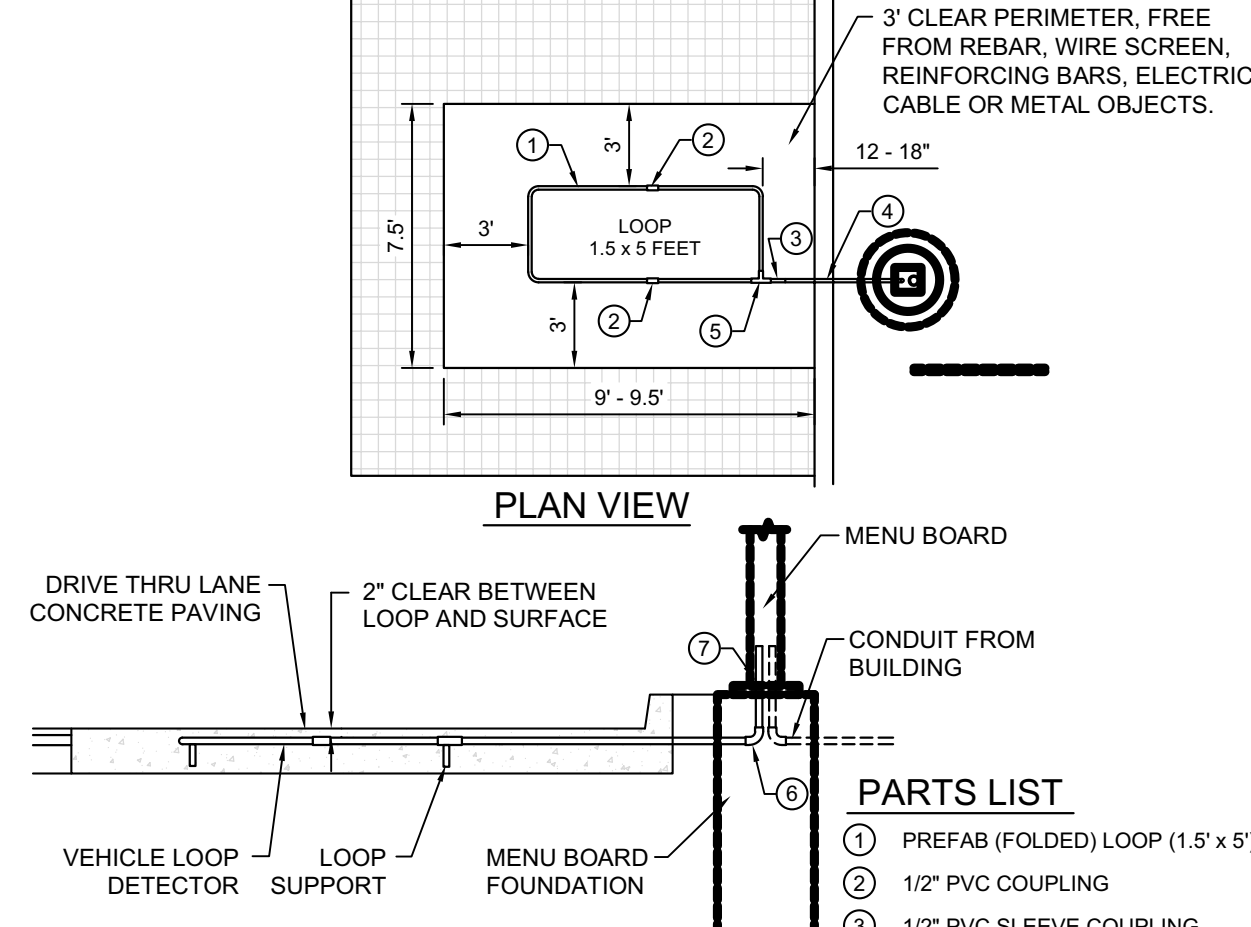
1 DRIVE-THRU PLAN - FLUSH WITH FFE
C-4.3 NOT TO SCALE



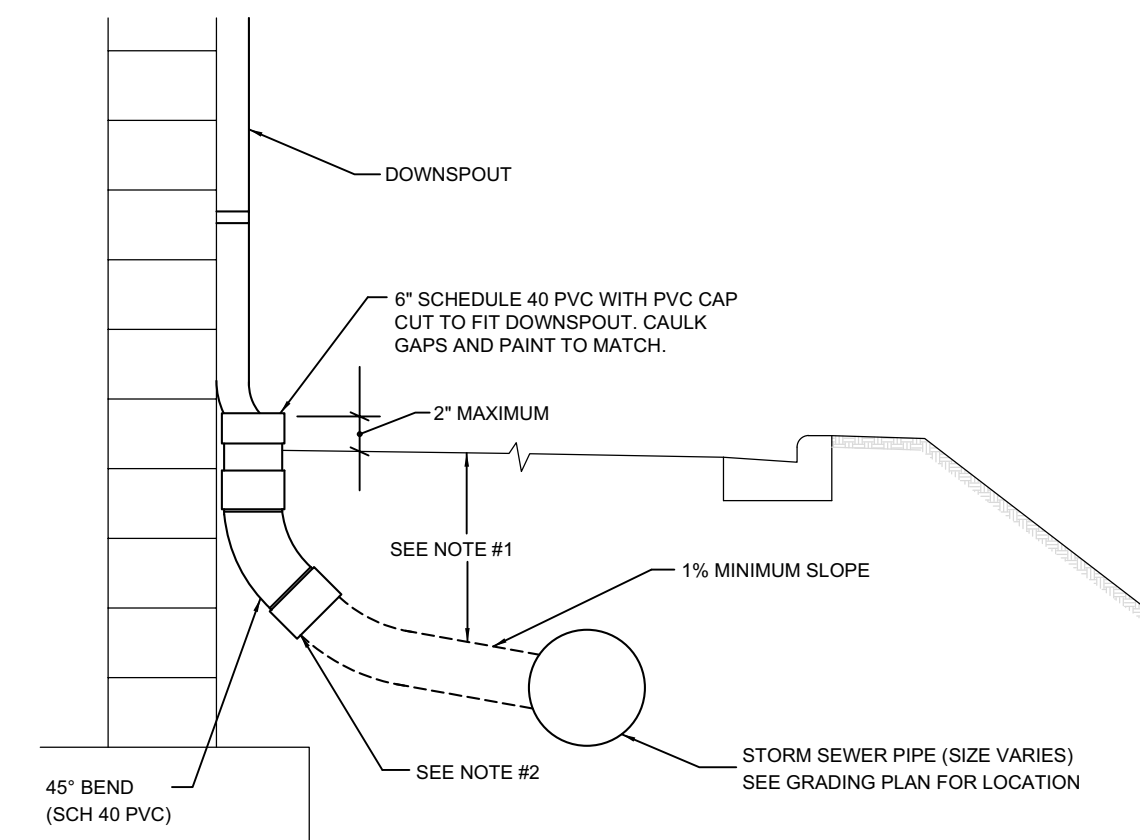
2 DRIVE-THRU ISOMETRIC
C-4.3 NOT TO SCALE



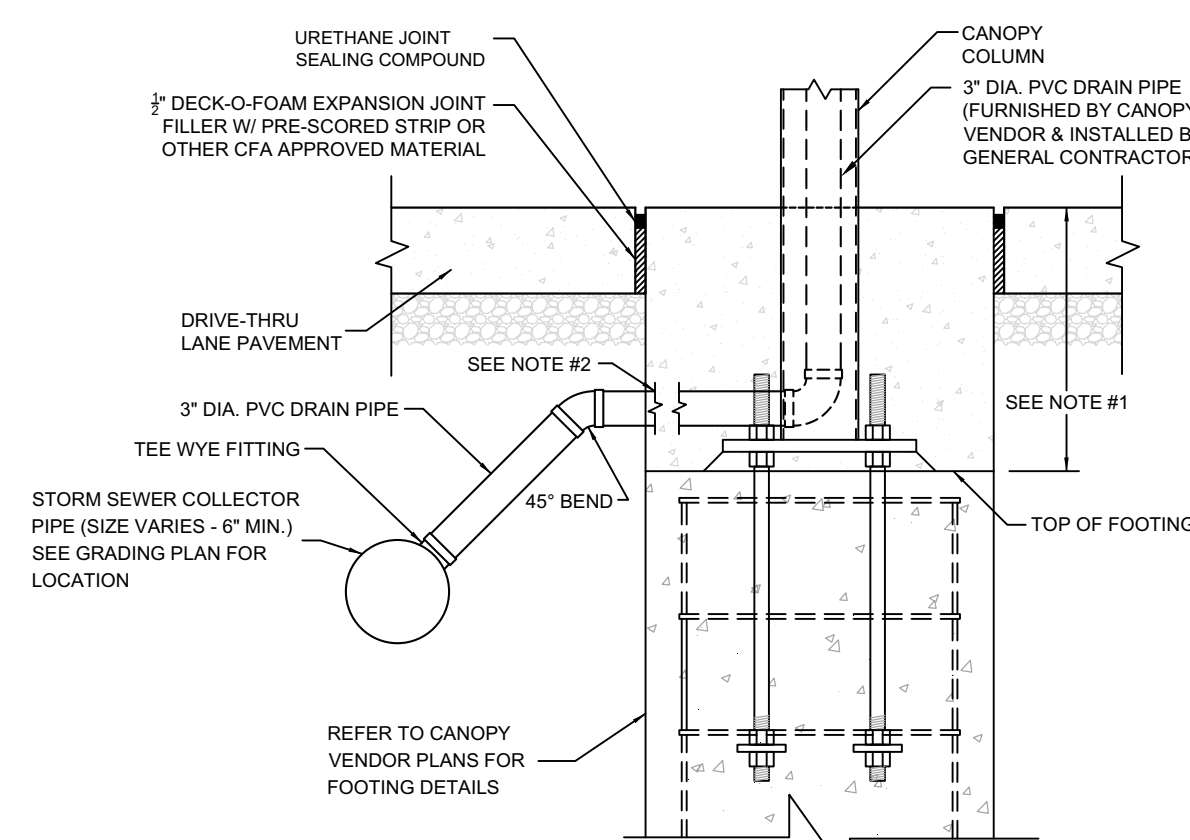
3 DRIVE-THRU ORDER POINT ISLAND
C-4.3 NOT TO SCALE



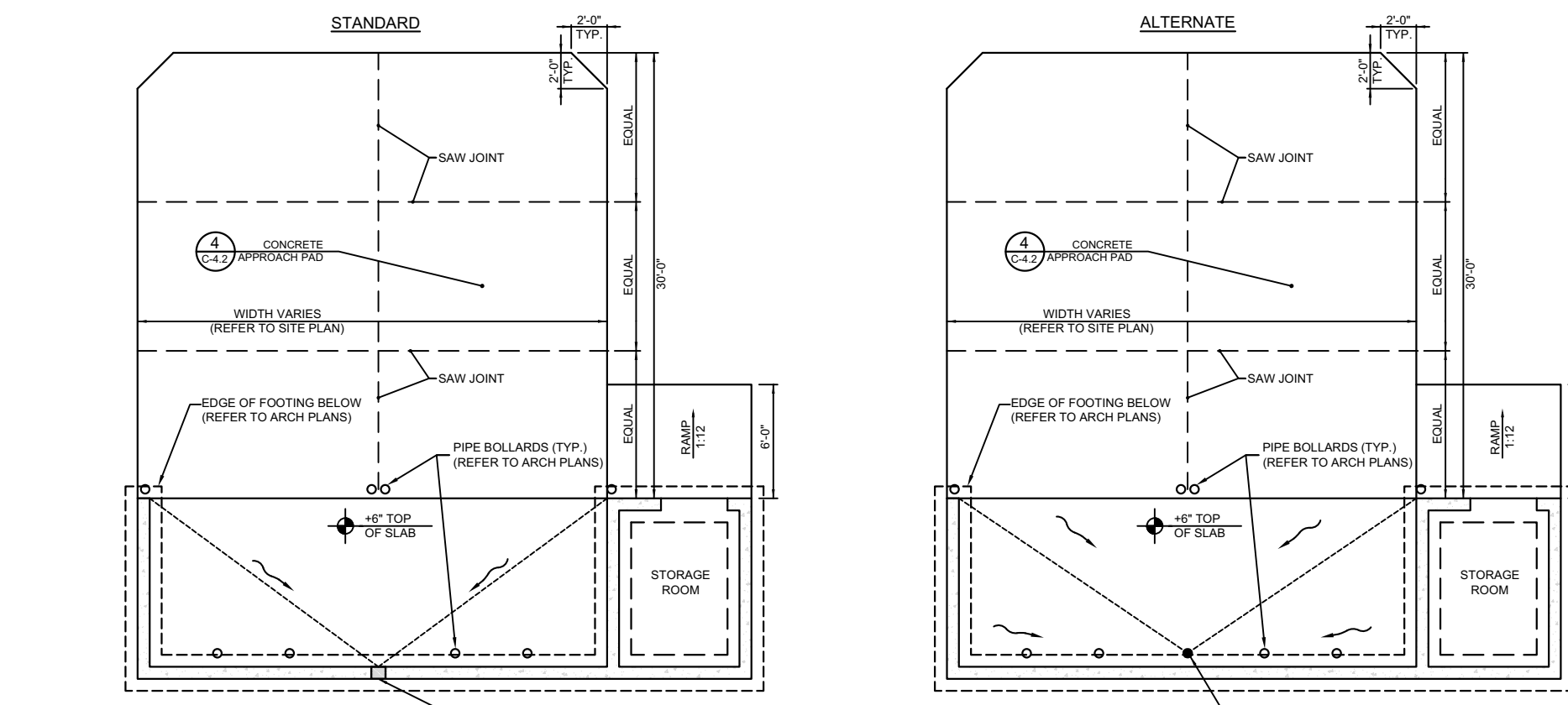
4 MENU BOARD LOOP DETECTION SYSTEM
C-4.3 NOT TO SCALE



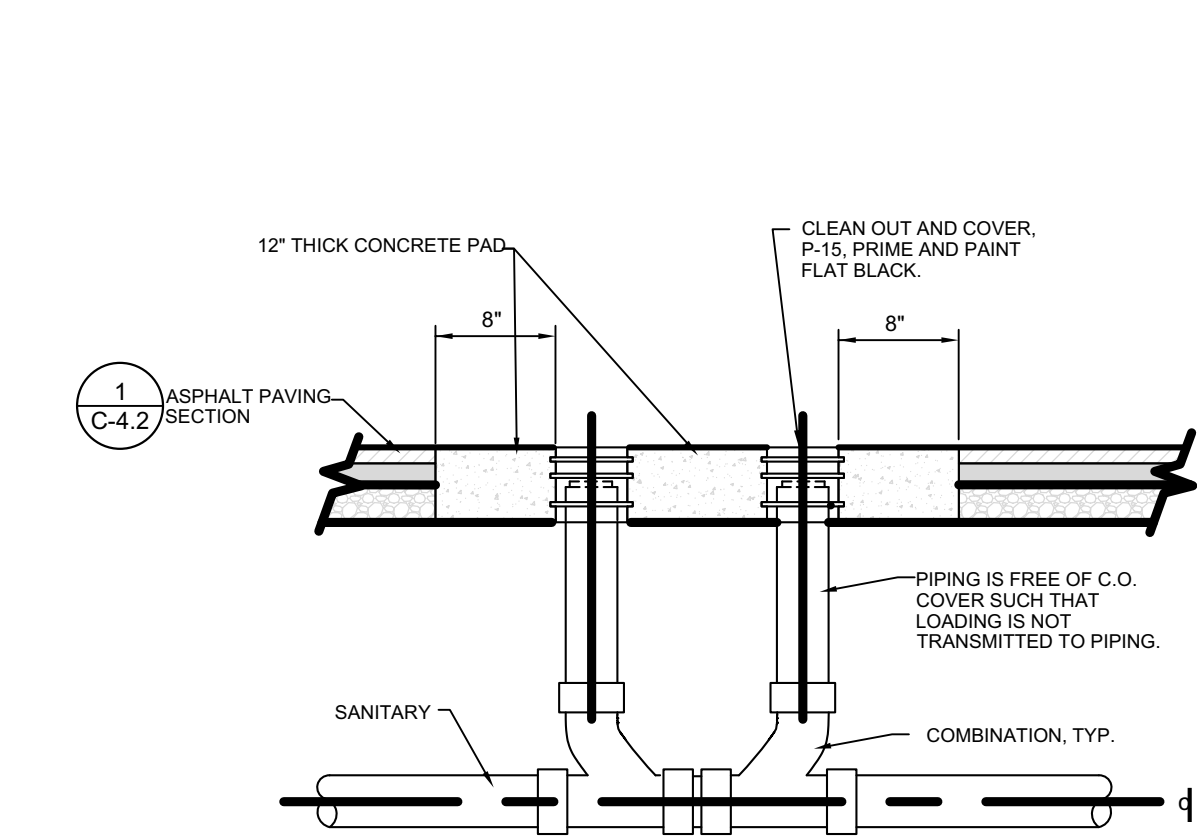
5 BUILDING DOWNSPOUT CONNECTION
C-4.3 NOT TO SCALE



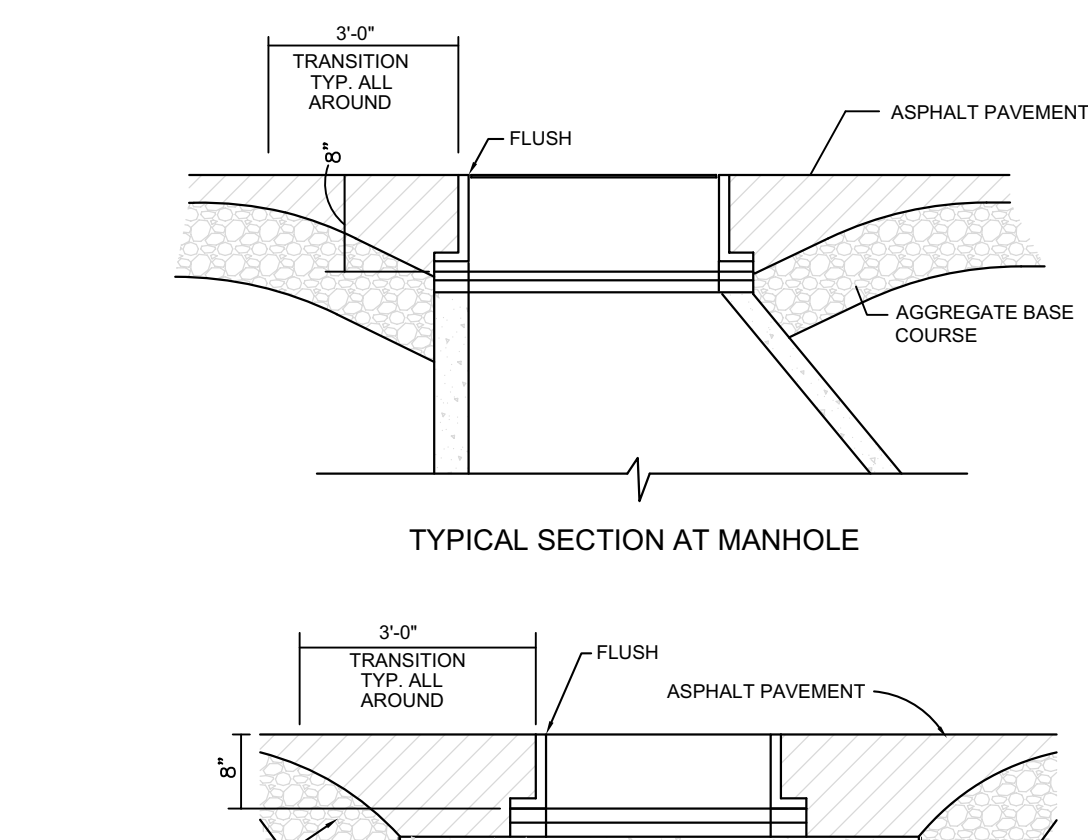
6 CANOPY DOWNSPOUT CONNECTION
C-4.3 NOT TO SCALE



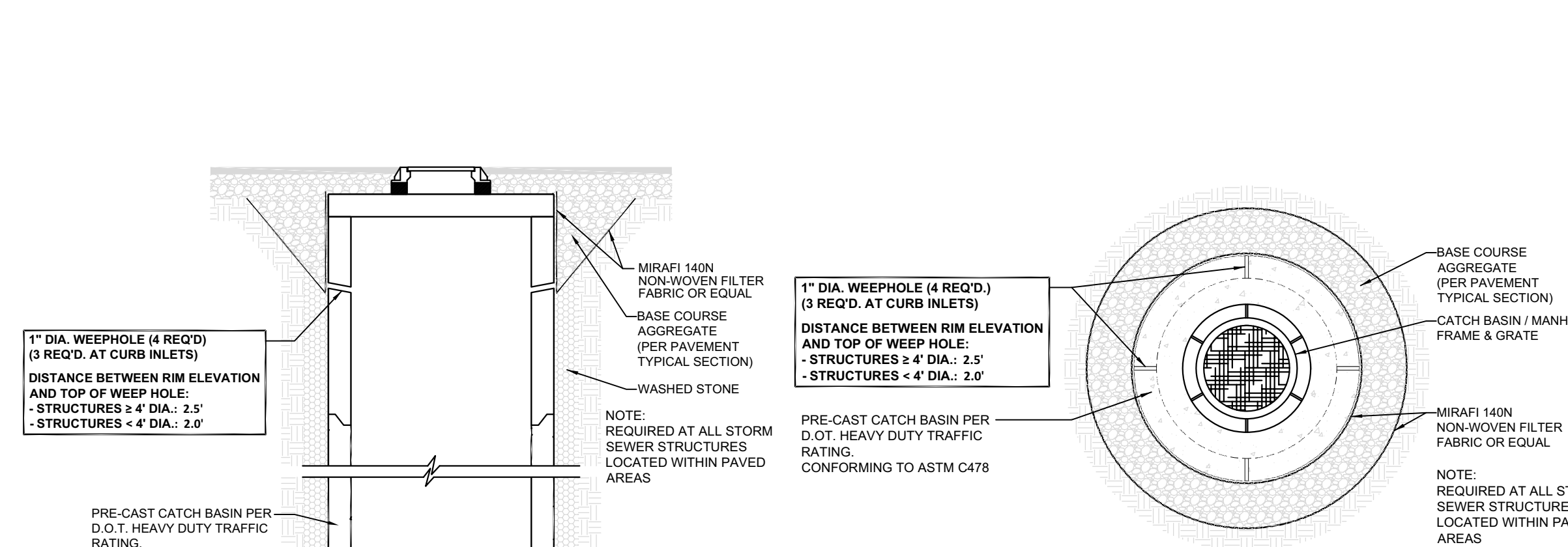
7 SCREENED REFUSE ENCLOSURE
C-4.3 NOT TO SCALE



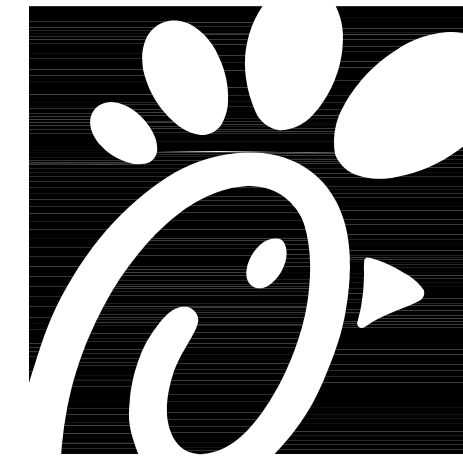
8 CLEAN OUT (OUTSIDE OF BUILDING)
C-4.3 NOT TO SCALE



9 THICKENED PAVEMENT @ STRUCTURES
C-4.3 NOT TO SCALE



10 STORM STRUCTURE WEEP HOLE DETAILS
C-4.3 NOT TO SCALE



Chick-fil-A

Chick-fil-A
5200 Buffington Road
Atlanta, Georgia 30349-2998

Bowman

Certificate of Authorization License No. 30462
901 SE 17th St, Suite 300
Fort Lauderdale, FL 33316
Phone: (954) 714-4447
www.bowman.com
© 2021 Bowman Consulting Group Ltd

Seal

This item has been digitally signed and sealed by Andres Mizrahi, P.E. on the date adjacent to this seal.
Printed copies of this document are not considered signed and sealed and the signature must be verified on any electronic copies.
2023.08.29 15:17:45-04'00'
ANDRES MIZRAHI, P.E.
FLORIDA REG. NO. 92421

CHICK-FIL-A
ATLANTIC & ATLANTIC
POWERLINE
2100 W ATLANTIC BLVD
POMPANO BEACH, FL 33069

FSR#05557

BUILDING TYPE / SIZE: P14 LS BN

REVISION SCHEDULE
NO. DATE DESCRIPTION

CONSULTANT PROJECT # 010014-01-208
PRINTED FOR PERMIT
DATE 8/24/2023
DRAWN BY STC

Information contained on this drawing and in all digital files produced for above named project may not be reproduced in printed project without the written consent of Bowman Consulting Group, Inc.
SHEET NO. 1 OF 1
CHICK-FIL-A DETAILS
SHEET NUMBER

PERMIT
P23-12000037
10/04/2023